

Local Campus

Type School campus

Size 60'000 m²

Location Biel-Bienne

Time 2011-2012, master, 3rd semestre

Professor Pascal Müller, Müller Sigrist, Zürich

Duration 1 semestre

This project of a new campus is made of two departments of the BFH school, architecture with civil engineering and information technologies.

My idea is to create one school for both departments and to make it open with the city. This is why I add some public functions inside the school and create a public meeting way through all the levels of the building.

The project is on the actual way to the lake of Biel. With my intervention, I want to create a new way, faster and bigger. Structure is for me very important because it is always present and very strong. I have designed a kind of pillar for each level to give them a unique identity. All other elements of facades and inside walls are on prefabricated wood elements to contrast with the concrete structure.

Mathieu Ziegenhagen

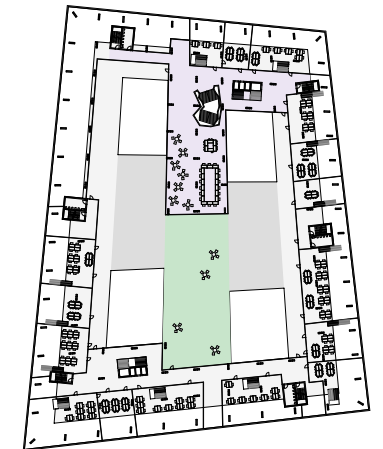
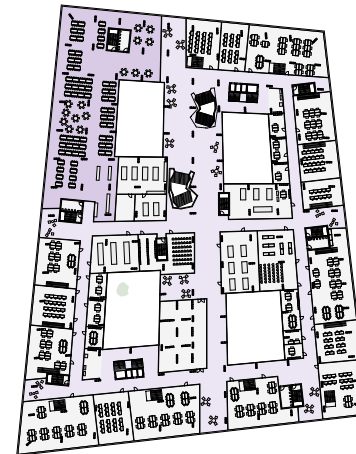
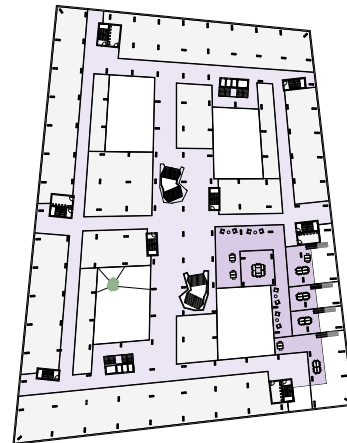
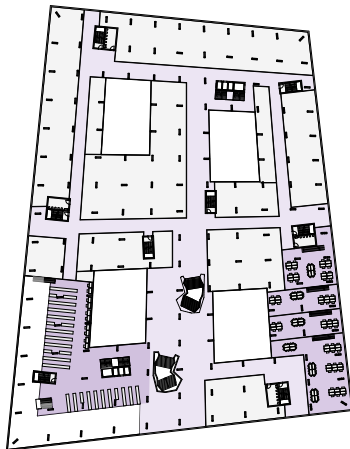
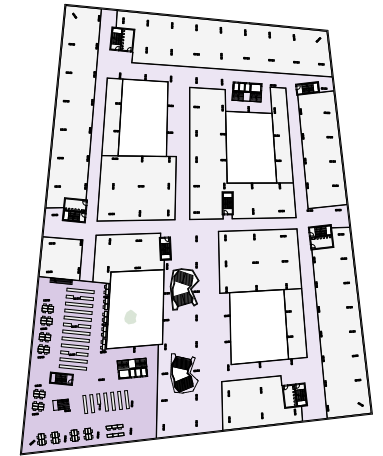
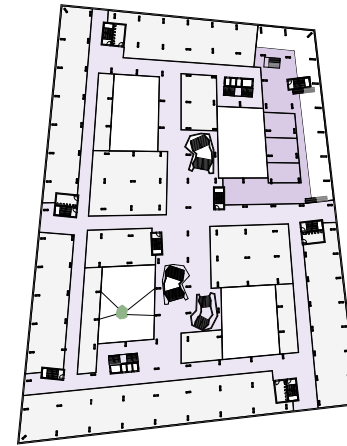
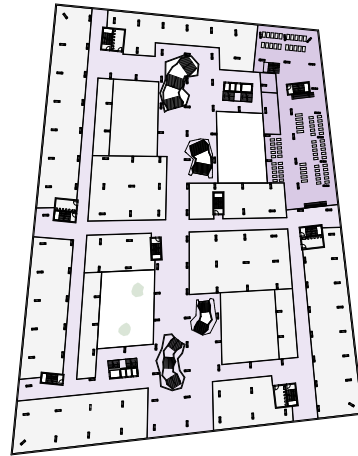
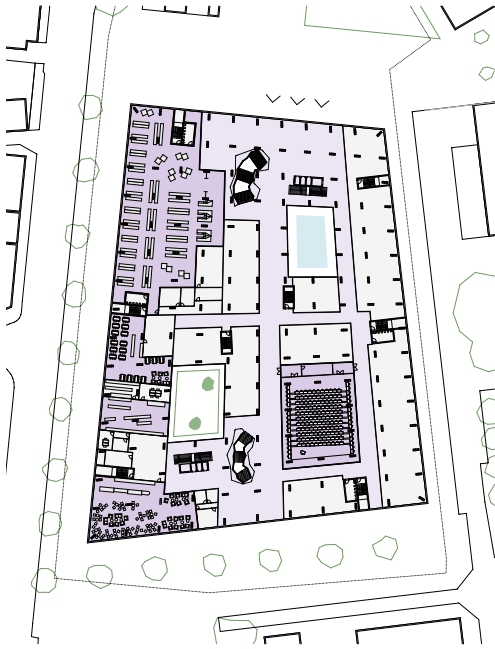


Local Campus, Biel-Bienne

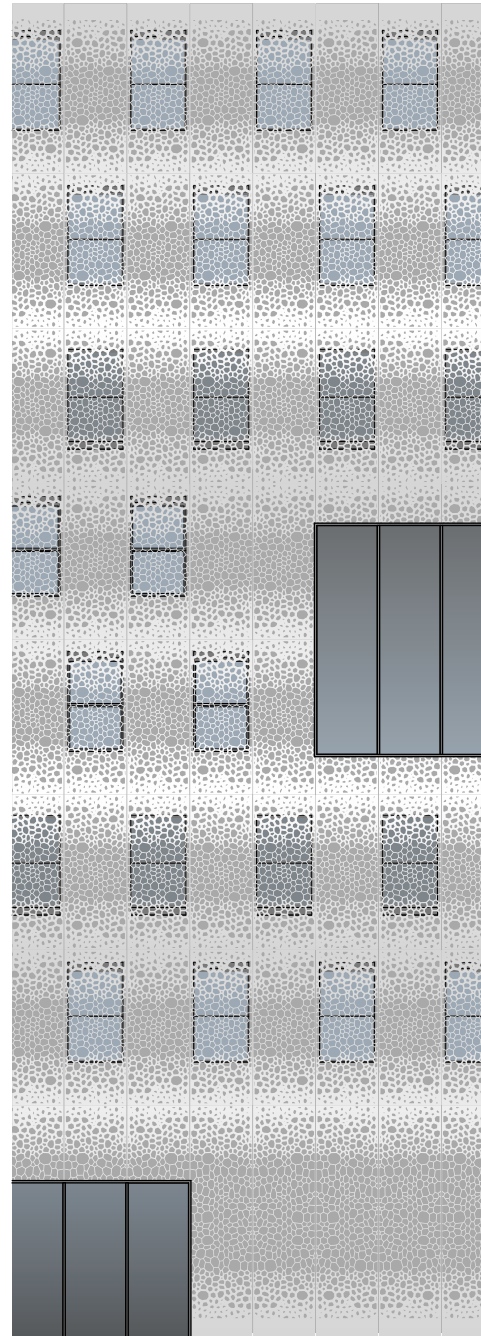
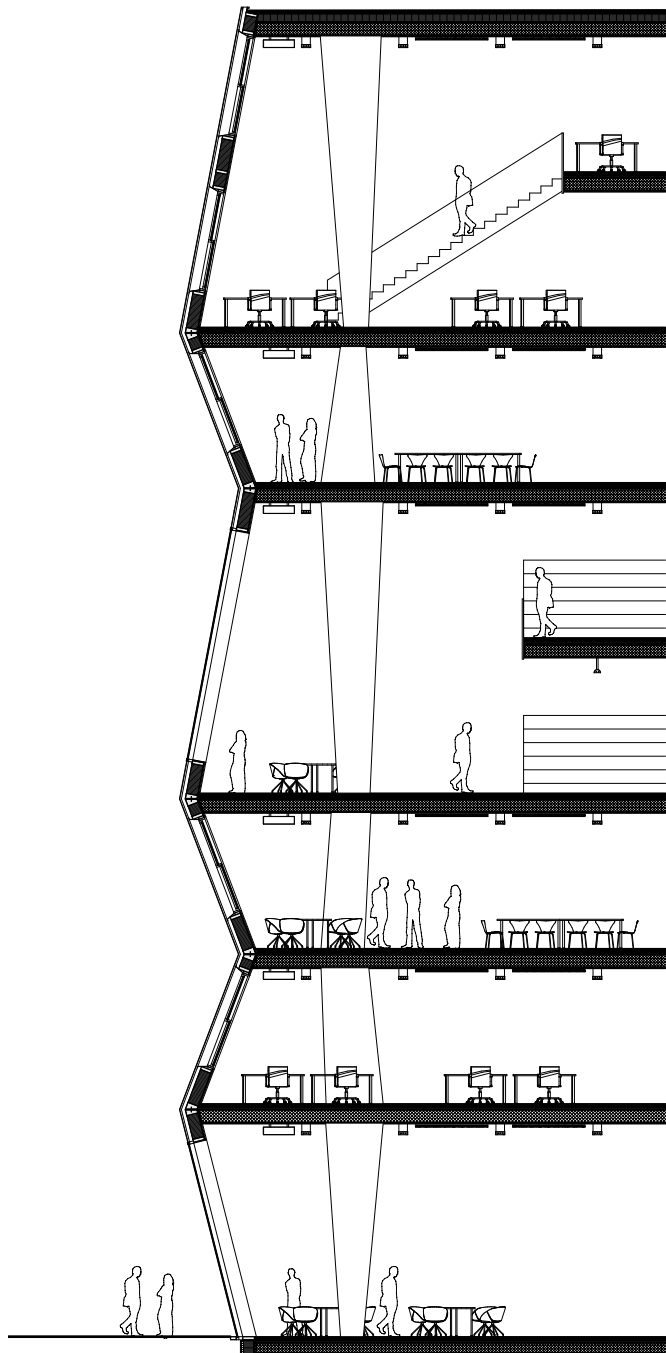


Existing and new way to the lake of Biel.

Creation of a place to give to all public building of this site an clear adresse.



All levels of the school, with the « purple » public functions, shops for groundfloor, library, offices for startup and cafeteria.



details
concrete structure, wood
prefabricated elements for
facade and inside walls.